



www.egyptsat.com

WebAx acceleration software

- 1- Download WebAx from www.egyptsat.com/webax.exe, install it.
- 2- Request a key from EgyptSat to enable you to use the demo, once you get the key run WebAx and right click the icon in the system tray, and select Enter key and insert the key.
- 3- Once you start WebAx it will set your proxy to 127.0.0.1 and the port to 3457, restart the Internet explorer to make sure that the new proxy setting is in effect.
- 1- When running the program the below program window will show up;

Current connection speed in kbps

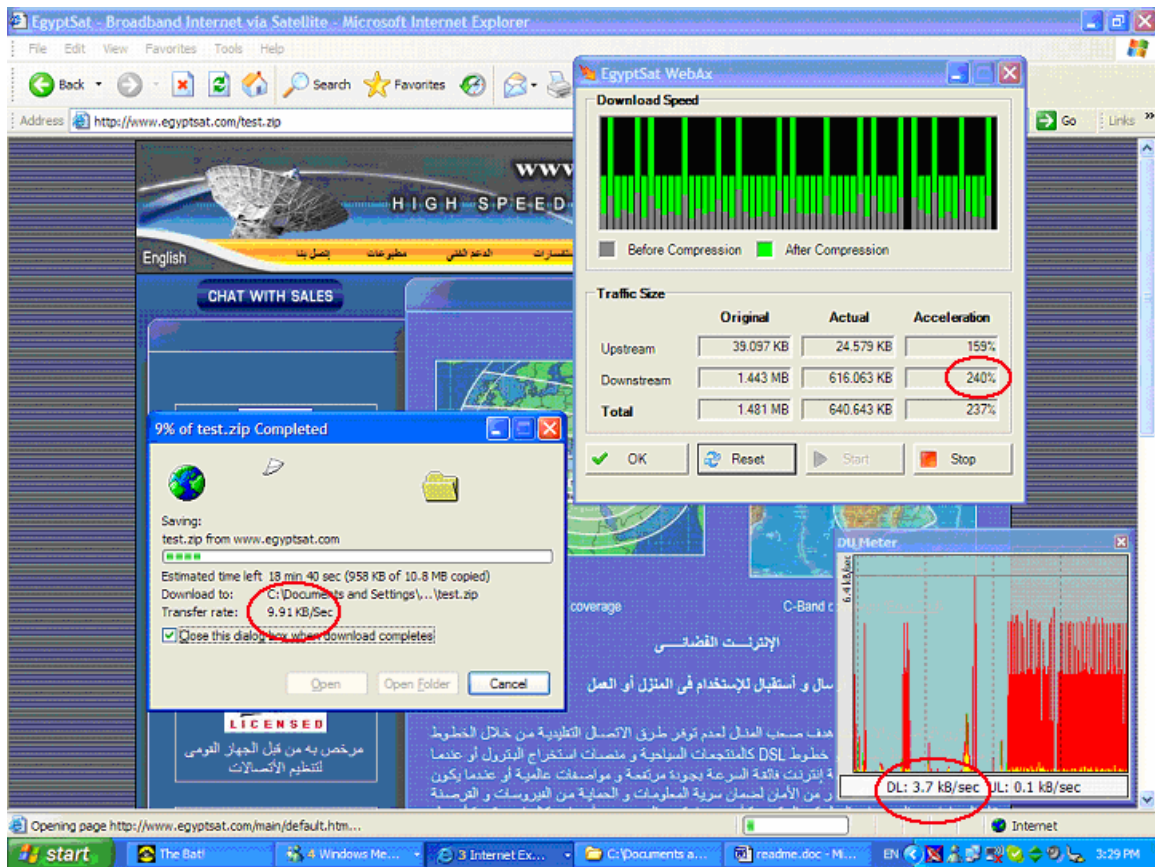
Green colour shows the speed after acceleration

Gray colour shows the speed if Webax is not used, and this is the physical speed used on the connection

Speed acceleration percentage and the traffic size before it is compressed and after it is compressed

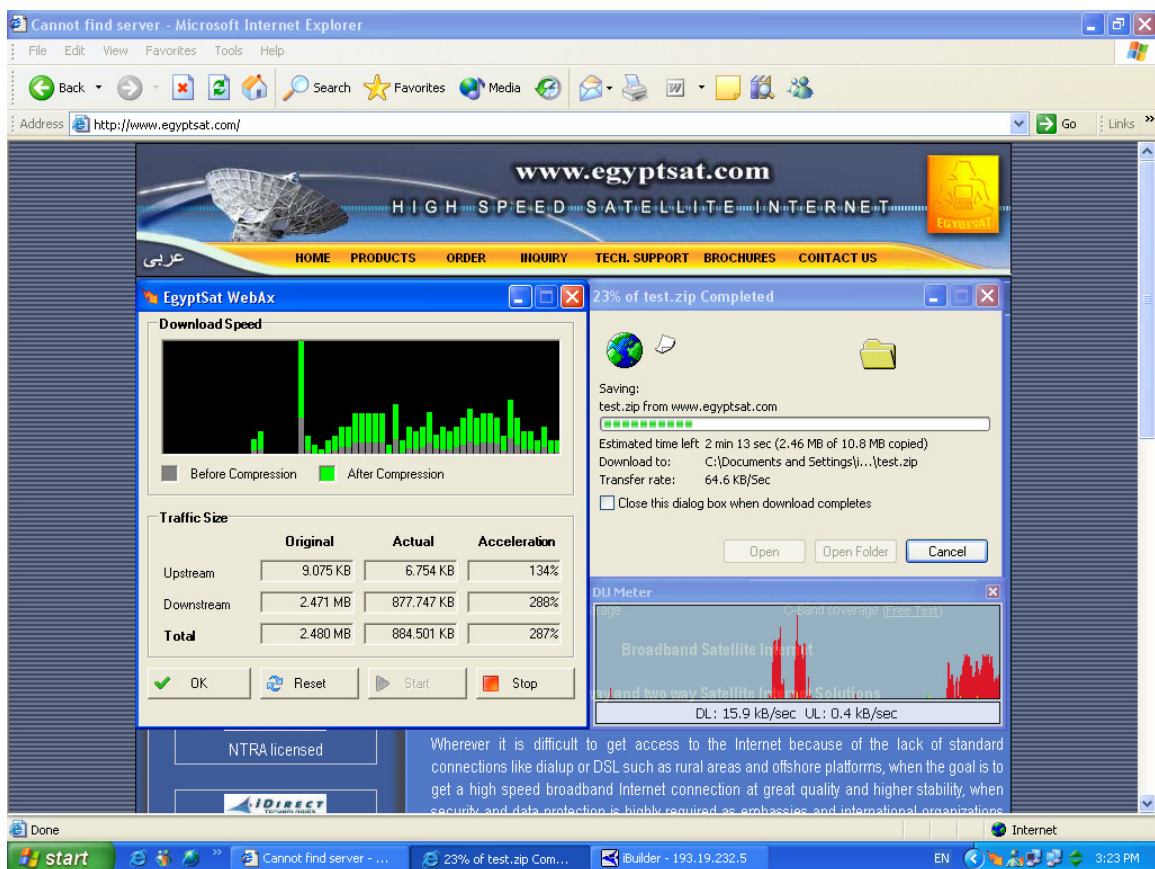
	Original	Actual	Acceleration
Upstream	7.436 KB	2.851 KB	261%
Downstream	9.002 MB	2.774 MB	325%
Total	9.009 MB	2.777 MB	324%

- 2- Go to <http://www.egyptsat.com/test.htm> to perform a download test, the download speeds should be 2 to 5 times faster than the speed of the physical connection you get on DUMeter (to get DUMeter download it from www.egyptsat.com/dumeter.exe)



Acceleration on dialup connection

Note that the line speed as shown on the DUMeter is 3.7 kByte (29.6 kbps) and the actual download speed after acceleration is 9.91 kByte (79.28 kbps) and the speed acceleration ratio is 240%



Acceleration on 128 kbps satellite connection

Note that the line speed as shown on the DUMeter is 15.9 kByte (127.2 kbps) and the actual download speed after acceleration is 64.4 kByte (515 kbps) and the speed acceleration ratio is 288%